

AGENDA SUPPLEMENT

Health and Wellbeing Board

To: Members of the Health and Wellbeing Board

Date: Wednesday, 11 September 2019

Time: 4.30 pm

Venue: The George Hudson Board Room - 1st Floor West Offices (F045)

The Agenda for the above meeting was published on **Tuesday 3 September 2019**. The attached additional documents are now available for the following agenda item:

8. Primary Care Home and Networks (Pages 1 - 16)
Presentation

The Executive Director, Primary Care and Population Health, NHS Vale of York Clinical Commissioning Group and the vice-chair of the Health and Wellbeing Board will give a presentation which will introduce the emerging primary care networks and how this national development could integrate into the community place based delivery models in the city of York.

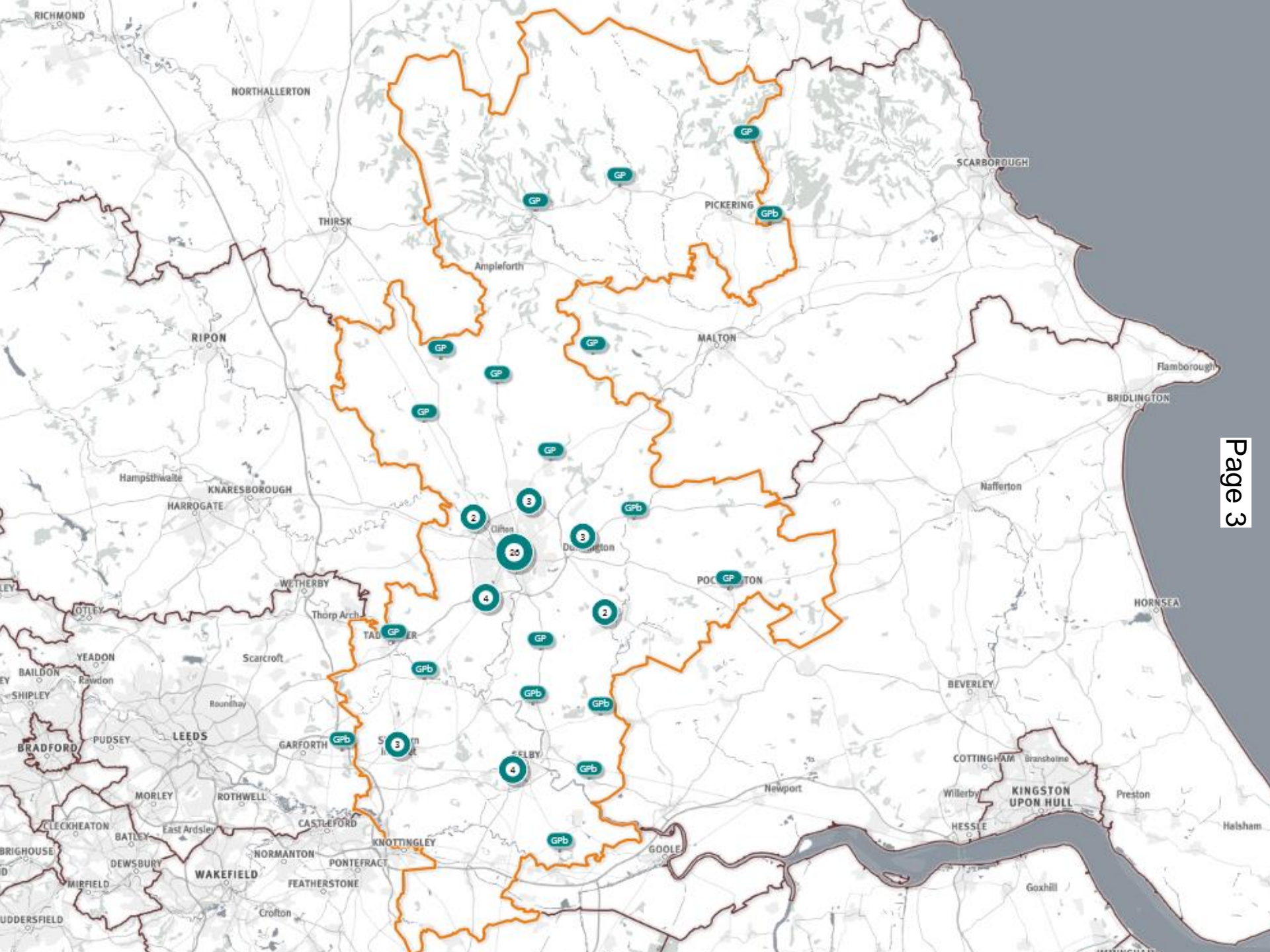
This agenda supplement was published on
Monday 9 September 2019

This page is intentionally left blank

**Introduction to Primary Care,
Primary Care Networks,
Primary Care Home in York**

Vale of York General Practice

- 26 Practices with over 60 sites
- 12 Practices in the City of York
- Total registered patients April 2019 – 361,768
- Largest Practice Priory Medical - 58,722
- Smallest Practice Terrington – 1,262



Context: Primary Care Challenges

- Demographic change, rising patient demand and expectations
- Workforce concerns
- Infrastructure challenges
- General practice resilience and sustainability

Five-Year Framework for GP Contract Reform

- On 31 January 2019, *“Investment and evolution: A five-year framework for GP contract reform to implement The NHS Long Term Plan ”* was published
- This agreement between NHS England and the BMA General Practitioners Committee (GPC) in England, and supported by Government, translates commitments in The NHS Long Term Plan into a five-year framework for the GP services contract

Primary Care Networks

- Primary Care Networks (PCNs) become an essential building block of every Integrated Care System
- PCN will typically serve a population of c30,000-50,000 people
- Each Primary Care Network must have a boundary that makes sense
- Normally a Practice will only join one network

Role of PCNs

- Put in place ***seamless care*** (physical & mental health) across primary care and community services
- Deliver care ***close to home*** based on natural geographies, population distribution and need rather than organisational boundaries.
- ***Integrate across primary care networks and secondary care*** & with secondary care in primary care settings.
- ***Population health approach***, focusing on prevention and anticipatory care, operating in partnership with other agencies
- Promote and support ***self care*** wherever appropriate
- Build from what people know about their patients and population

Investment in Additional Roles in Primary Care

Year	Additional Role	Reimbursement level
From 2019	Social prescribing link workers	Reimbursed at 100% recurrently
From 2019	Clinical pharmacists	Reimbursed at 70% recurrently
From 2020	Physician associates	Reimbursed at 70% recurrently
From 2020	First contact physiotherapists	Reimbursed at 70% recurrently
From 2021	First contact community paramedics	Reimbursed at 70% recurrently

Primary Care Networks in York

- **York City Centre PCN** – Jorvik/Gillygate, East Parade, Unity Health, Dalton Terrace – **53,807**
- **York Medical Group** – York Medical Group – **44,615**
- **Nimbuscare Ltd** – Pocklington, Elvington, Old School Medical, Front Street, MyHealth, Haxby Group, Priory Medical Group – **149,287**

Challenges

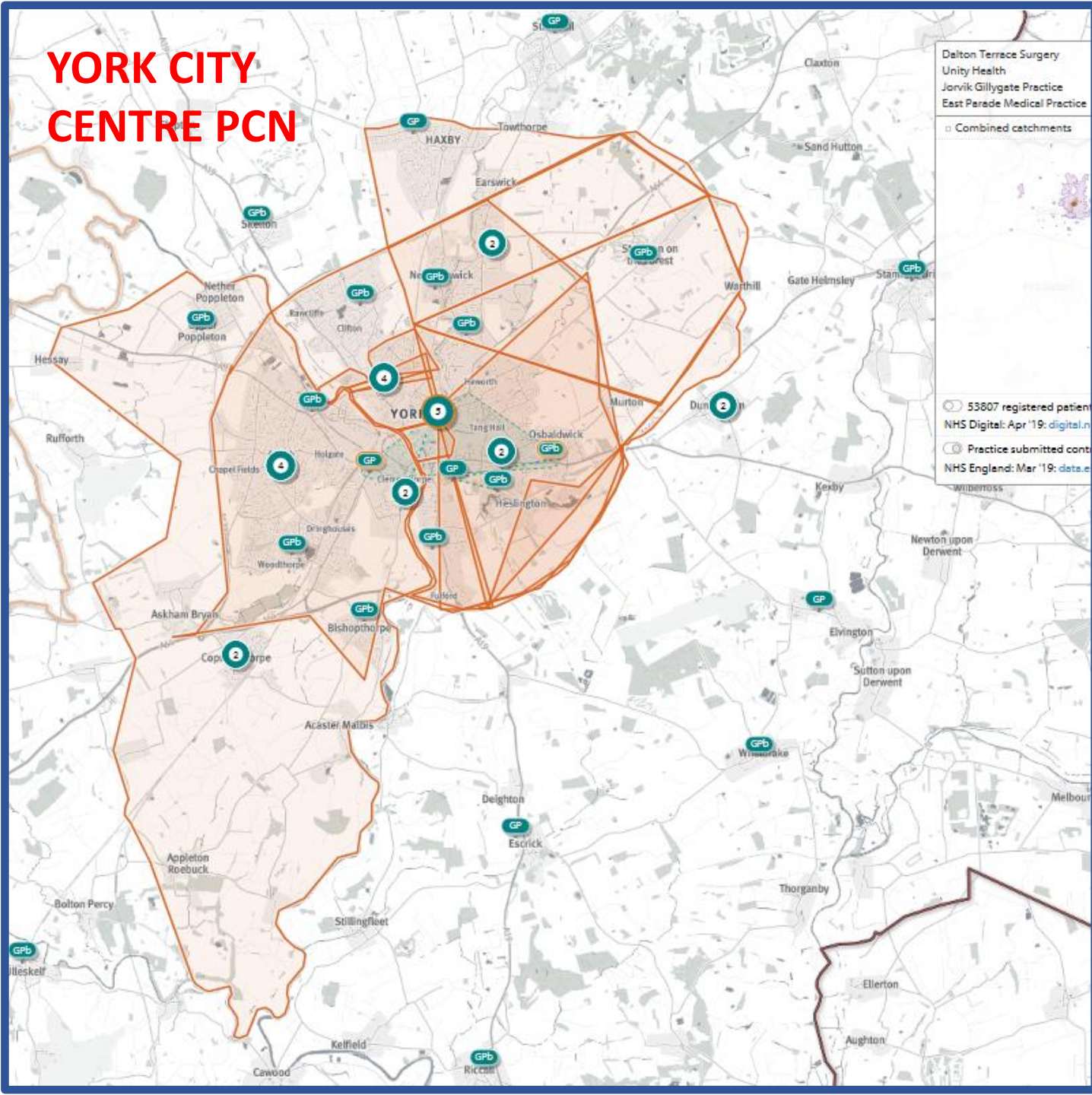
PCN will have many expectations and demands on them e.g.

1. Setting up
2. Developing an approach to sustainable primary care
3. Strengthening and expanding the primary care team
4. Implementing digitally enabled working

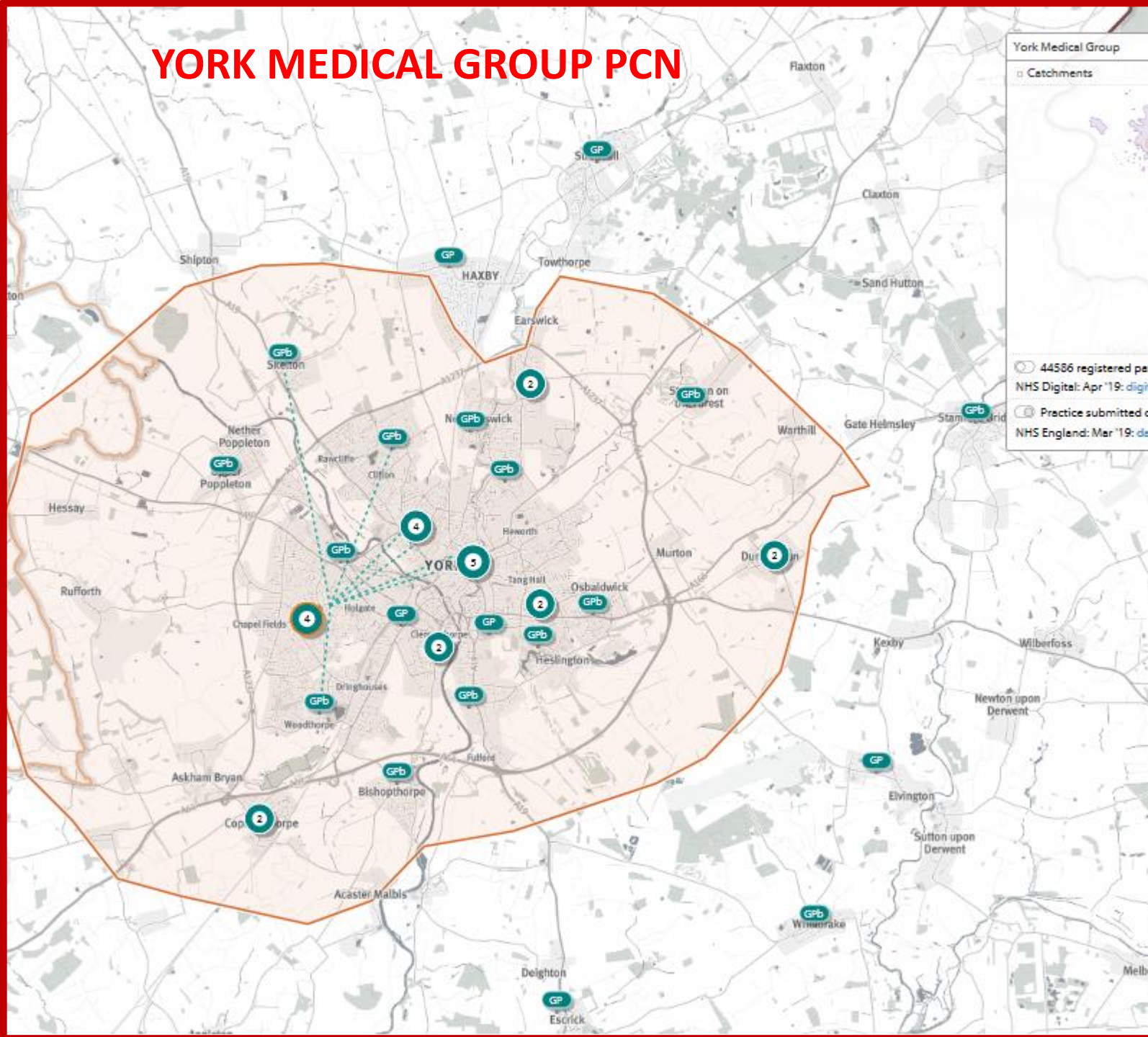
Also issues with

1. Geographical boundaries
2. Building relations with wider stakeholders & working with partners
3. Developing a population health approach

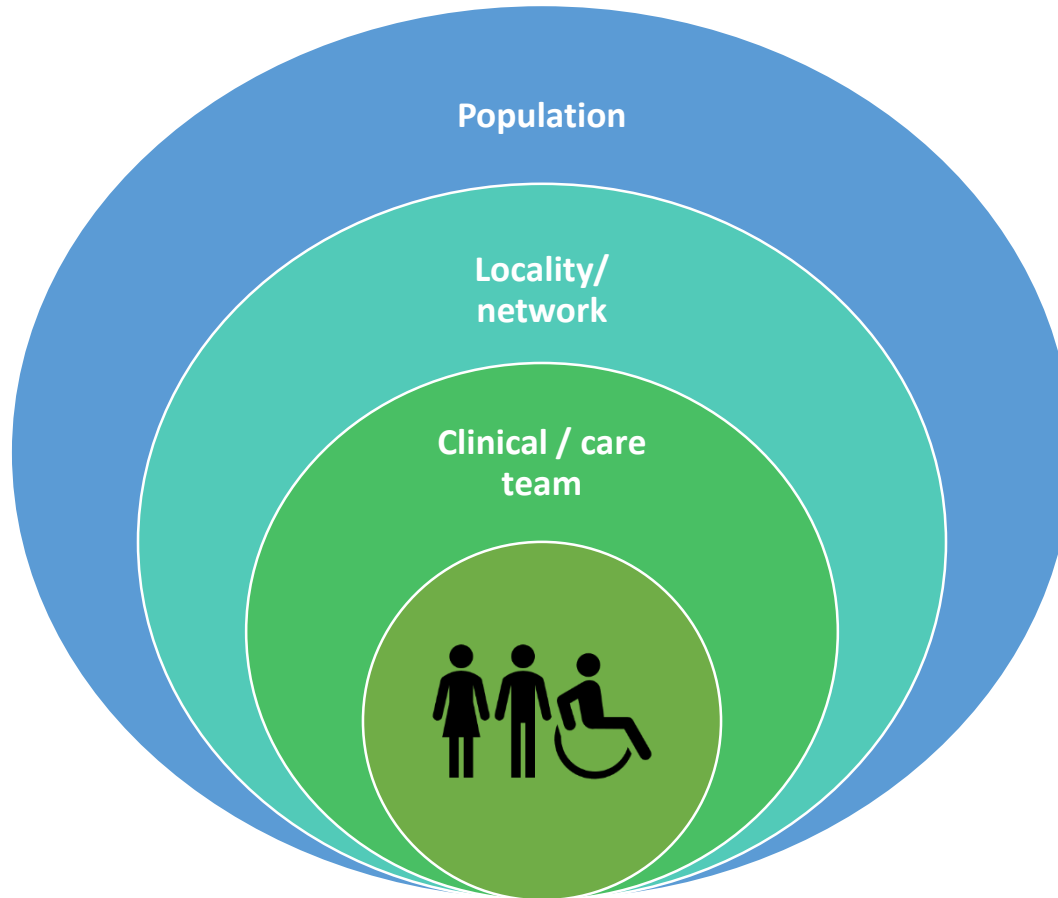
YORK CITY CENTRE PCN



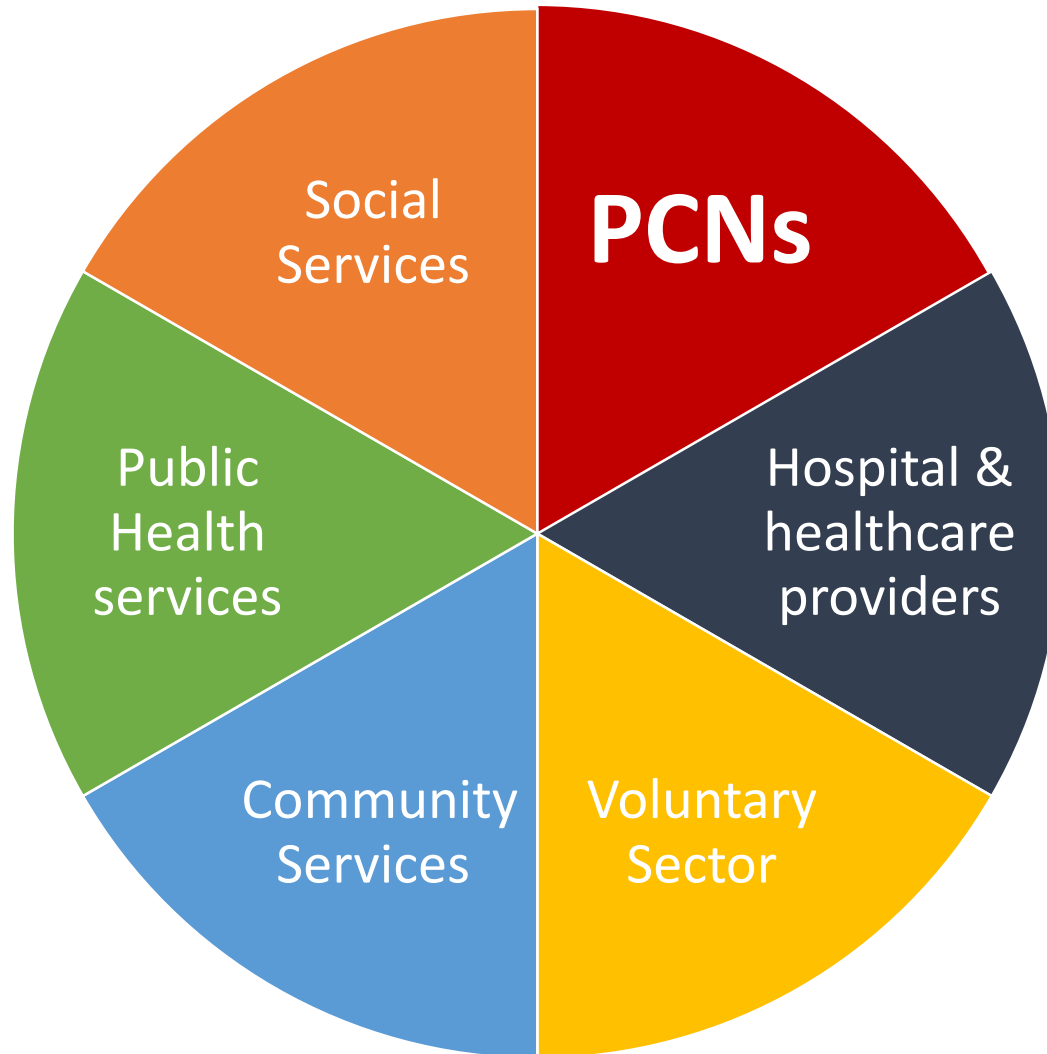
YORK MEDICAL GROUP PCN



Developing a population health approach



Role for Primary Care Home



Key Information and Documents

- <https://www.longtermplan.nhs.uk/>
- <https://www.england.nhs.uk/publication/gp-contract-five-year-framework/>
- <https://www.england.nhs.uk/gp/gpfv/redesign/primary-care-networks/pcn-faqs/>
- <https://www.england.nhs.uk/gp/gpfv/redesign/primary-care-networks/events-and-webinars/>